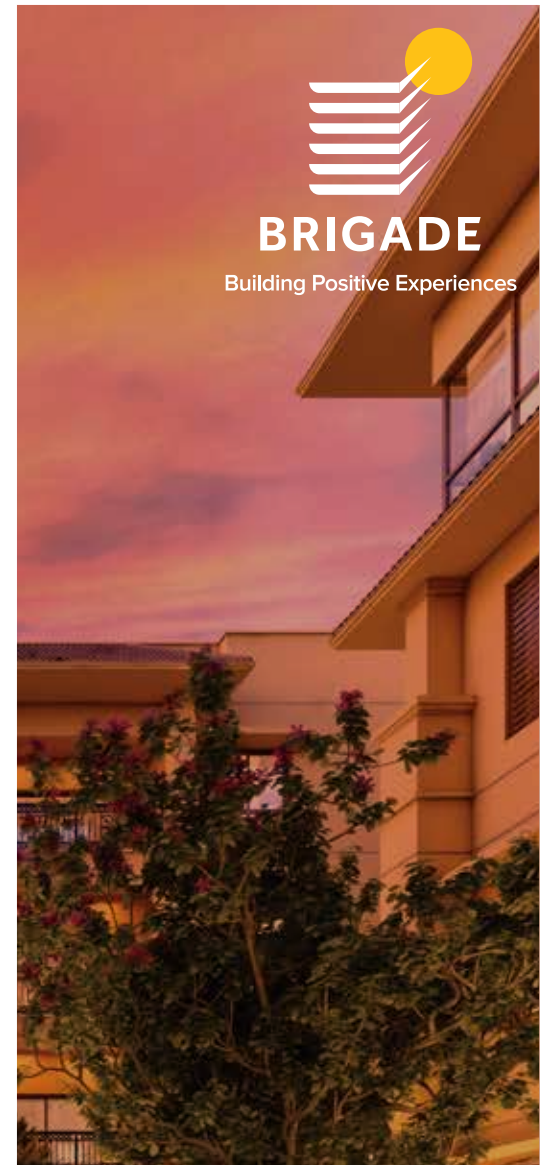




Artist's Impression



RERA no. PRM/KA/RERA/1250/303/PR/220207/004671

PEARL  
— AT —  
BRIGADE  
ATMOSPHERE  
DEVANAHALLI





Representation purpose only

## Live in the limelight.

The second phase of Brigade Atmosphere, Pearl, is a low-rise gated residential enclave consisting of luxurious courtyard villaments. Surrounded by acres of lush greenery these unique homes nestle you in the luxury you deserve.



# Exclusively yours, coveted by all.

The presidential villaments are an amalgamation of exclusive villa features and the luxury of community living. These villaments are set in ground-plus-3-floor structures. Each villament has 3 bedrooms, a dedicated study and multiple terraces to have an independent and peaceful life in the heart of the community. There is a dedicated common area and a lift for every two villaments.



Artist's Impression



Representation purpose only



Actual shot





Artist's Impression

## Designed for the spotlight.

These villaments are designed keeping in mind access to natural light and ventilation, clustered around a central courtyard for the ideal mix of private and communal spaces. The villaments' Mediterranean-themed warm tone juxtaposes against the green open surroundings to raise the bar on what luxurious living really feels like.



Representation purpose only

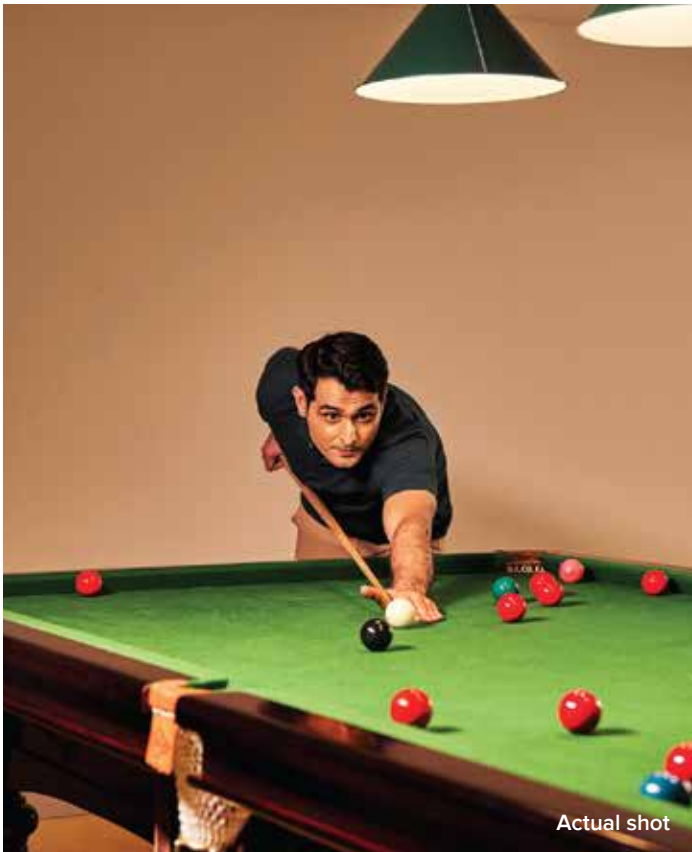


Artist's Impression





Actual shot



Actual shot



Actual shot

# So good, you can't stop talking about it.

A central point for health, entertainment and socialising, the clubhouse and sports facilities boasts of a lifestyle that's a conversation-starter.



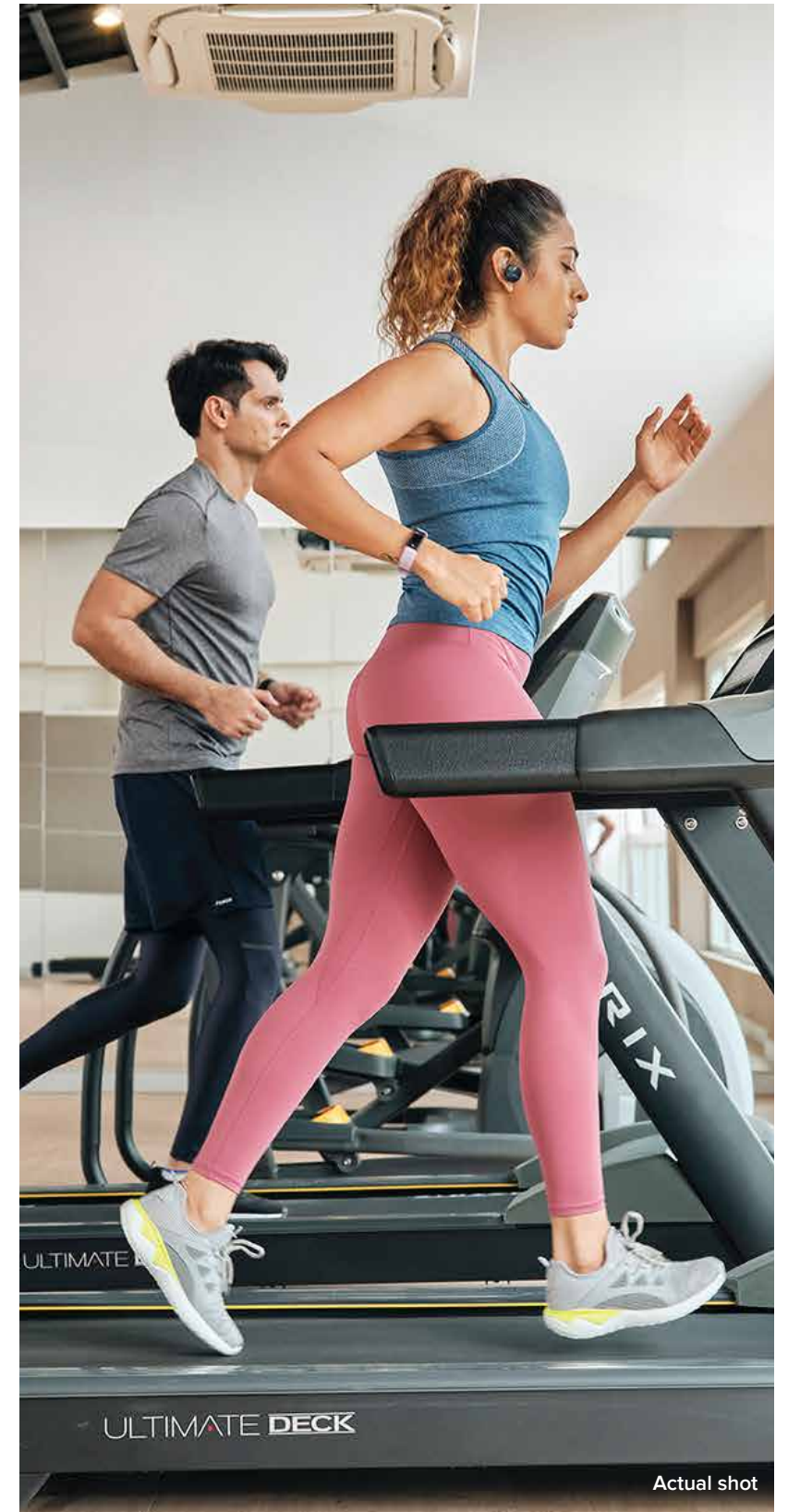


Representation purpose only

SWIMMING POOL

## Play on. Show off.

Unwind, compete, and play to your heart's content.  
Fitness and fun live at Pearl at Brigade Atmosphere.



Actual shot

GYMNASIUM





Representation purpose only

MULTI-PURPOSE HALL

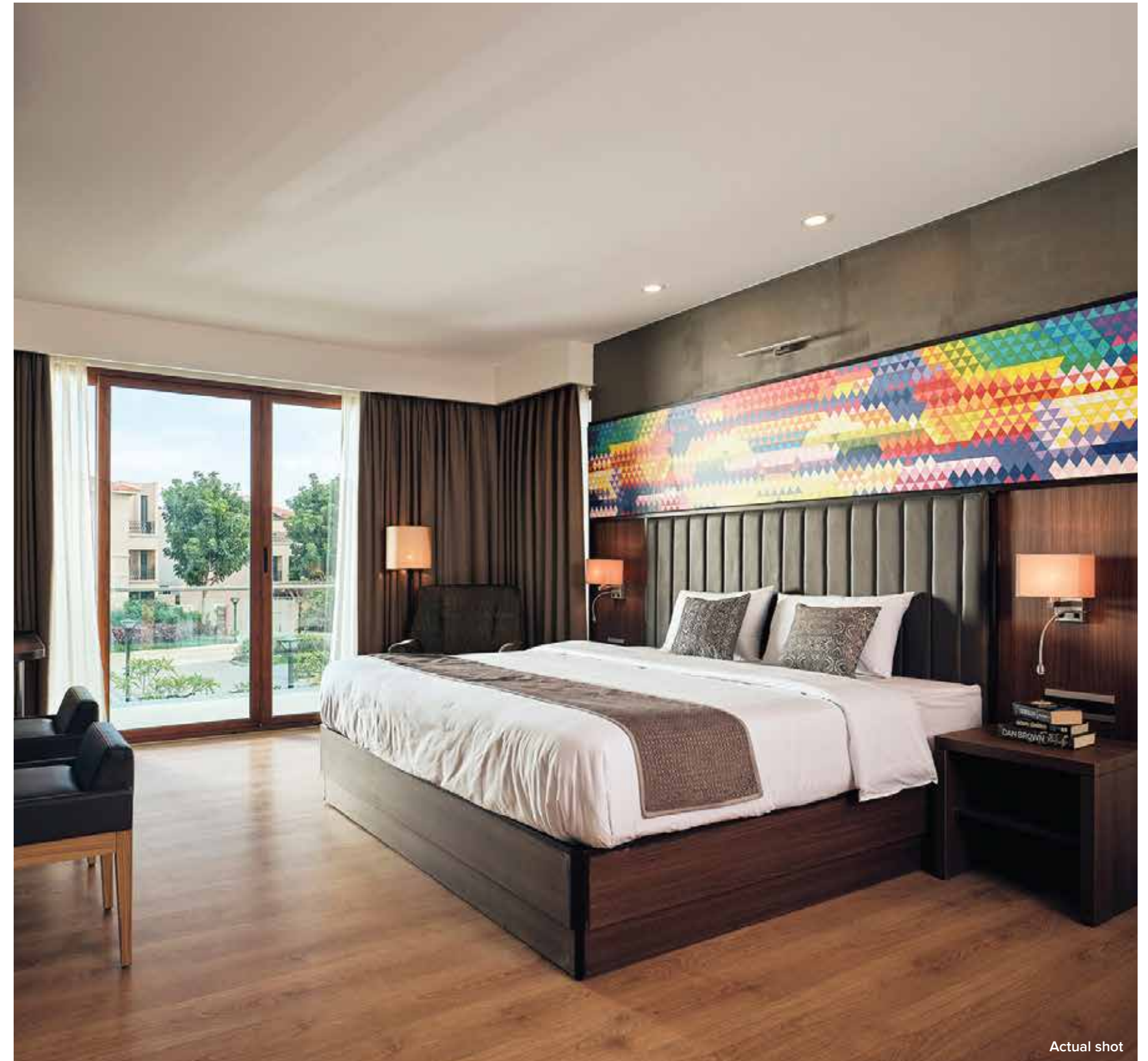


Representation purpose only

HEALTH CLUB

## A life so good, your guests will never want to leave.

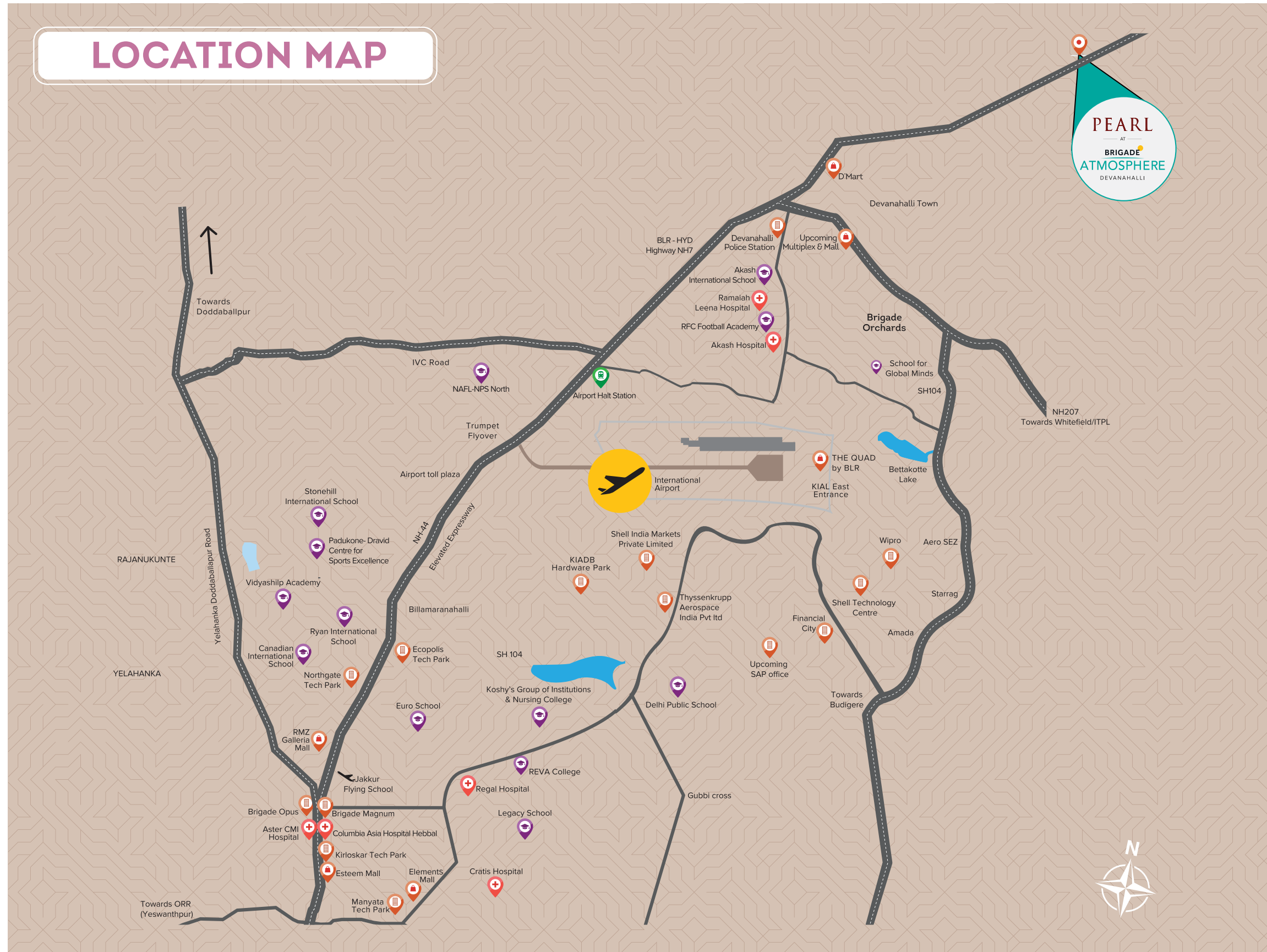
When you host your friends and family, your guests will feel right at home. Sometimes, maybe too much.



Actual shot

GUEST ROOMS

# LOCATION MAP



## Enviably well-located.

Close enough to all the conveniences of the city, and yet far away enough to get away from the chaos of it. The perfect balance for the perfect life, and 25 mins from the International Airport, too.





## A World Of Possibilities Is A Short Drive Away.

Educate, empower and enable your loved ones to pursue their dreams, with the right opportunities at the right institute. And that too, close to home.

### WITHIN 20 MINUTES

THE SCHOOL FOR  
GLOBAL MINDS  
(Brigade Orchards)

CHANAKYA UNIVERSITY  
(Brigade Orchards)

EURO  
SCHOOL

EUROKIDS  
PRE-SCHOOL

CARMEL ENGLISH  
SCHOOL

NAFL-NPS  
NORTH

ATAL BIHARI VAJAPAYEE  
RESIDENTIAL SCHOOL

SHANTHIKETHAN  
PUBLIC SCHOOL

STERLING  
ENGLISH RESIDENTIAL  
SCHOOL

AKASH  
INTERNATIONAL  
SCHOOL

### WITHIN 30 MINUTES

DELHI PUBLIC  
SCHOOL

OXFORD  
ENGLISH SCHOOL

GITAM  
UNIVERSITY

PADUKONE-DRAVID  
CENTRE FOR SPORTS  
EXCELLENCE

CANADIAN  
INTERNATIONAL  
SCHOOL

STONEHILL  
INTERNATIONAL  
SCHOOL

### WITHIN 45 MINUTES

VIBGYOR  
SCHOOL

RYAN INTERNATIONAL  
SCHOOL

VIDYASHILP  
ACADEMY

KOSHYS GROUP OF  
INSTITUTIONS & NURSING  
COLLEGE

REVA  
COLLEGE

MS COLLEGE OF  
ENGINEERING



## One step closer to wellness.

Whether it's a routine check-up or an emergency, rest assured that the absolute best of healthcare is a short drive away.

### WITHIN 10 MINUTES

RAMAIAH MEDICAL CENTRE  
(Brigade Orchards)

RAMAIAH LEENA  
HOSPITAL

AKASH  
HOSPITAL

SHRI SHIRDI SAI  
HOSPITAL

MANASA  
HOSPITAL

### WITHIN 30-45 MINUTES

ASTER CMI  
HOSPITAL

DRISHTI  
EYE CARE

MANIPAL  
HOSPITAL

RAMAIAH  
HOSPITAL

MOTHERHOOD  
HOSPITAL

REGAL  
HOSPITAL

CRATIS  
HOSPITAL

BAPTIST  
HOSPITAL





## Get to work.

Whether you need to pop into the office for a quick catch up or your business needs you there 7 days a week, Bangalore's business hubs are a quick drive away.

### WITHIN 20 MINUTES

THE ARCADE AT  
BRIGADE ORCHARDS

KEMPEGOWDA  
INTERNATIONAL AIRPORT

KIADB AEROSPACE SEZ  
& HARDWARE PARK

### WITHIN 30 MINUTES

IFCI FINANCIAL  
CITY

BOEING  
INTERNATIONAL  
CORPORATION

WIPRO  
INFRASTRUCTURE  
ENGG.

AMADA INDIA  
TECHNICAL  
CENTER

STARRAG  
INDIA

TEXAS  
INSTRUMENTS

SHELL  
INDIA MARKETS

DYNAMATIC

AIRBUS

THYSSENKRUPP

CENTUM

SAP LABS

### WITHIN 45 MINUTES

MANYATA  
BUSINESS PARK

ECOPOLIS  
TECH PARK

NORTHGATE  
OFFICE PARK

KIRLOSKAR  
TECH PARK

INFOSYS  
LIMITED



## Fun and food, for every mood.

Shop 'til you drop, and watch all the latest films, and grab a bite to eat, and have a fun day out, when you want, where you want.

### WITHIN 20 MINUTES

SIGNATURE CLUB RESORT  
(Brigade Orchards)

TAMARIND  
(Signature Club)

THE ARCADE AT  
BRIGADE ORCHARDS

SPORTS ARENA & STADIUM  
(Brigade Orchards)

NATIONAL CRICKET ACADEMY  
(New campus in KIADB)

RFC FOOTBALL  
ACADEMY

THE QUAD  
BY BLR

GOLFSHIRE  
CLUB

### WITHIN 30 MINUTES

NANDI  
HILLS

CLARKS  
EXOTICA

OLDE  
BANGALORE

DECATHLON

GARUDA  
MALL

GALLERIA  
MALL

ESTEEM  
MALL

PHOENIX MALL  
(Upcoming)

### WITHIN 45 MINUTES

CHAIRMANS  
CLUB

GOLDFINCH  
RETREAT

ELEMENTS  
MALL

SAHAKARANAGAR  
HIGH STREET

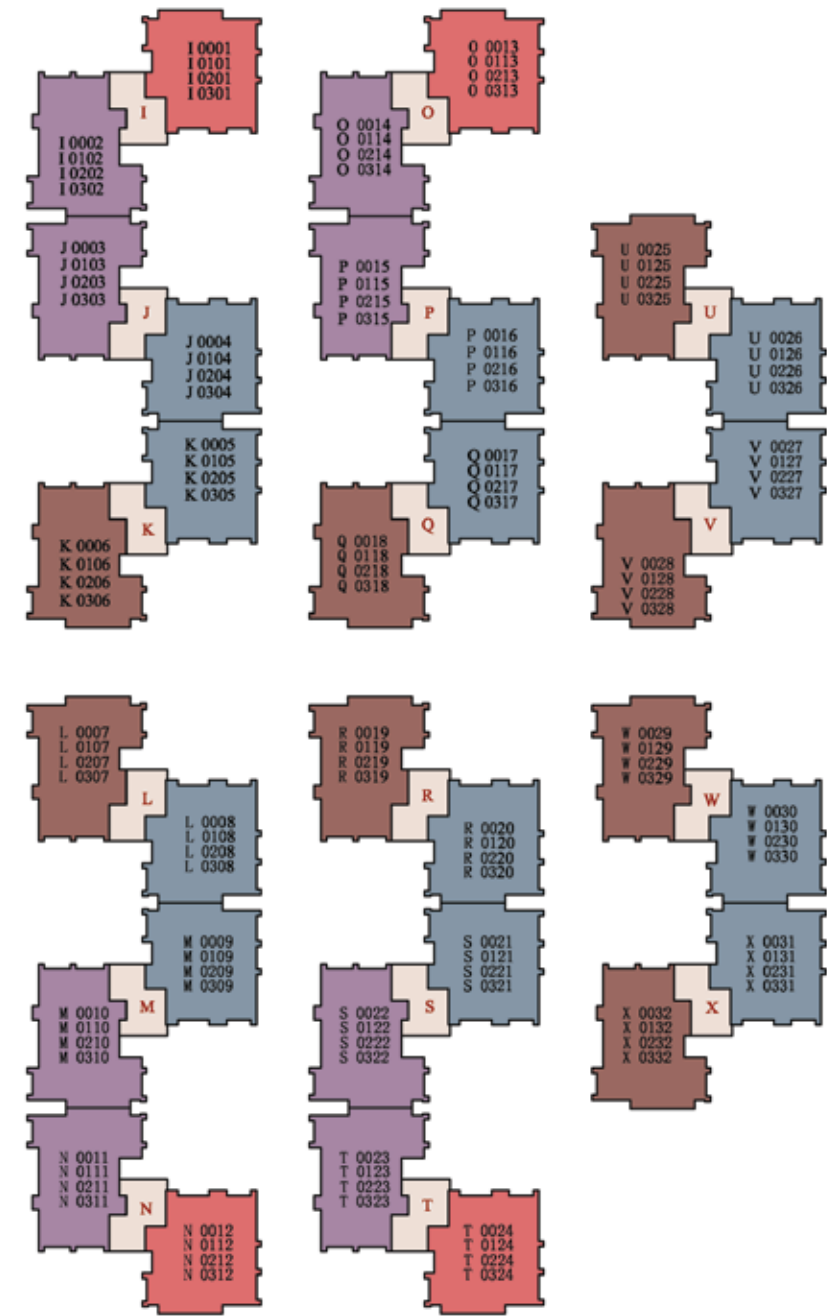
YELAHANKA  
HIGH STREET

THE LEELA  
PALACE





# UNIT DISTRIBUTION PLANS



## UNIT DISTRIBUTION PLAN



KEY PLAN

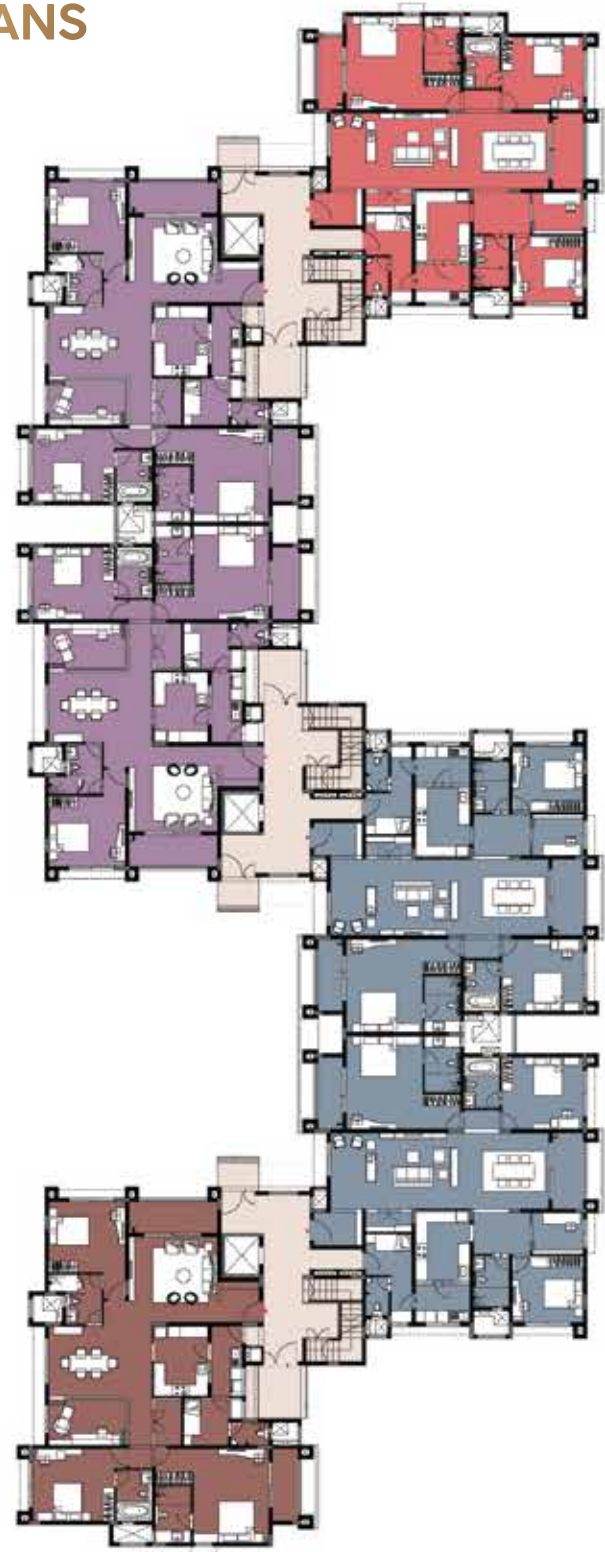
### Legend

- Type - A (SBA:2589 Sq.ft / 240.52 Sq.m)
- Type - A1(SBA:2589 Sq.ft / 240.52 Sq.m)
- Type - B (SBA:2540 Sq.ft / 235.96 Sq.m)
- Type - B1(SBA:2540 Sq.ft / 235.96 Sq.m)

The information depicted herein viz., master plans, floor plans, furniture layout, fittings, illustrations, specifications, designs, dimensions, rendered views, colours, amenities and facilities etc., are subject to change without notifications as may be required by the relevant authorities or the developer's architect, and cannot form part of an offer or contract. Whilst every care is taken in providing this information, the Developer cannot be held liable for variations. All illustrations and pictures are artist's impression only. The information are subject to variations, additions, deletions, substitutions and modifications as may be recommended by the company's architect and/or the relevant approving authorities. The Developer is wholly exempt from any liability on account of any claim in this regard. (1 square metre = 10.764 square feet). E & OE. All dimensions and calculations are done in metric system (M/Sq.m), and imperial system (Ft/Sq.ft) shown is for reference only. All dimensions indicated in the drawing are from unfinished surfaces, excluding plaster thickness and tile thickness.



# CLUSTER PLANS



**GROUND FLOOR PLAN  
CLUSTER I, J & K**



**Legend**

- Type - A (SBA:2589 Sq.ft / 240.52 Sq.m)
- Type - A1(SBA:2589 Sq.ft / 240.52 Sq.m)
- Type - B (SBA:2540 Sq.ft / 235.96 Sq.m)
- Type - B1(SBA:2540 Sq.ft / 235.96 Sq.m)

The information depicted herein viz., master plans, floor plans, furniture layout, fittings, illustrations, specifications, designs, dimensions, rendered views, colours, amenities and facilities etc., are subject to change without notifications as may be required by the relevant authorities or the developer's architect, and cannot form part of an offer or contract. Whilst every care is taken in providing this information, the Developer cannot be held liable for variations. All illustrations and pictures are artist's impression only. The information are subject to variations, additions, deletions, substitutions and modifications as may be recommended by the company's architect and/or the relevant approving authorities. The Developer is wholly exempt from any liability on account of any claim in this regard. (1 square metre = 10.764 square feet). E & OE. All dimensions and calculations are done in metric system (M/Sq.m), and imperial system (Ft/Sq.ft) shown is for reference only. All dimensions indicated in the drawing are from unfinished surfaces, excluding plaster thickness and tile thickness.



**FIRST FLOOR PLAN  
CLUSTER I, J & K**



**Legend**

- Type - A (SBA:2589 Sq.ft / 240.52 Sq.m)
- Type - A1(SBA:2589 Sq.ft / 240.52 Sq.m)
- Type - B (SBA:2540 Sq.ft / 235.96 Sq.m)
- Type - B1(SBA:2540 Sq.ft / 235.96 Sq.m)

The information depicted herein viz., master plans, floor plans, furniture layout, fittings, illustrations, specifications, designs, dimensions, rendered views, colours, amenities and facilities etc., are subject to change without notifications as may be required by the relevant authorities or the developer's architect, and cannot form part of an offer or contract. Whilst every care is taken in providing this information, the Developer cannot be held liable for variations. All illustrations and pictures are artist's impression only. The information are subject to variations, additions, deletions, substitutions and modifications as may be recommended by the company's architect and/or the relevant approving authorities. The Developer is wholly exempt from any liability on account of any claim in this regard. (1 square metre = 10.764 square feet). E & OE. All dimensions and calculations are done in metric system (M/Sq.m), and imperial system (Ft/Sq.ft) shown is for reference only. All dimensions indicated in the drawing are from unfinished surfaces, excluding plaster thickness and tile thickness.



# CLUSTER PLANS



SECOND FLOOR PLAN  
CLUSTER I, J & K



**Legend**

- Type - A (SBA:2589 Sq.ft / 240.52 Sq.m)
- Type - A1(SBA:2589 Sq.ft / 240.52 Sq.m)
- Type - B (SBA:2540 Sq.ft / 235.96 Sq.m)
- Type - B1(SBA:2540 Sq.ft / 235.96 Sq.m)



THIRD FLOOR PLAN  
CLUSTER I, J & K



**Legend**

- Type - A (SBA:2589 Sq.ft / 240.52 Sq.m)
- Type - A1(SBA:2589 Sq.ft / 240.52 Sq.m)
- Type - B (SBA:2540 Sq.ft / 235.96 Sq.m)
- Type - B1(SBA:2540 Sq.ft / 235.96 Sq.m)

The information depicted herein viz., master plans, floor plans, furniture layout, fittings, illustrations, specifications, designs, dimensions, rendered views, colours, amenities and facilities etc., are subject to change without notifications as may be required by the relevant authorities or the developer's architect, and cannot form part of an offer or contract. Whilst every care is taken in providing this information, the Developer cannot be held liable for variations. All illustrations and pictures are artist's impression only. The information are subject to variations, additions, deletions, substitutions and modifications as may be recommended by the company's architect and/or the relevant approving authorities. The Developer is wholly exempt from any liability on account of any claim in this regard. (1 square metre = 10.764 square feet). E & OE. All dimensions and calculations are done in metric system (M/Sq.m), and imperial system (Ft/Sq.ft) shown is for reference only. All dimensions indicated in the drawing are from unfinished surfaces, excluding plaster thickness and tile thickness.

The information depicted herein viz., master plans, floor plans, furniture layout, fittings, illustrations, specifications, designs, dimensions, rendered views, colours, amenities and facilities etc., are subject to change without notifications as may be required by the relevant authorities or the developer's architect, and cannot form part of an offer or contract. Whilst every care is taken in providing this information, the Developer cannot be held liable for variations. All illustrations and pictures are artist's impression only. The information are subject to variations, additions, deletions, substitutions and modifications as may be recommended by the company's architect and/or the relevant approving authorities. The Developer is wholly exempt from any liability on account of any claim in this regard. (1 square metre = 10.764 square feet). E & OE. All dimensions and calculations are done in metric system (M/Sq.m), and imperial system (Ft/Sq.ft) shown is for reference only. All dimensions indicated in the drawing are from unfinished surfaces, excluding plaster thickness and tile thickness.





Image for representation purpose only

## SPECIFICATIONS

### COMMON AREA FLOORING

**Waiting lounge / reception / ground floor lobby / lift lobby:** Granite / Vitrified tiles

**Staircases:** Cement Step Tiles

**Other lift lobbies and corridors (upper):**

Vitrified tiles / Industrial tiles

**Terrace:** Clay tiles / Industrial tiles

### UNIT FLOORING

**Living / Dining / Family / Foyer / Bedrooms /**

**Kitchen / Utility:** Vitrified tiles

**Balcony:** Anti skid ceramic tiles

**Toilets:** Ceramic tiles

**Maids room and toilet:** Ceramic tiles

### WALL DADO

**Kitchen:** Provision for modular kitchen\*

**Toilets:** Ceramic tiles

### KITCHEN

**a. Counter:** Provision for modular kitchen\*\*

**b. Plumbing:** Water inlet / drain provision for water purifier / sink and washing machine.

**c. Electrical:** 16 Amps - 3 nos.

6 Amps - 5 nos.

Common electrical point for washing machine.

### TOILETS

**CP Fittings:** Kohler / American Standards / Equivalent

**Sanitary fixtures:** Wall mounted EWC (Kohler / American Standards / Equivalent)

### DOORS

**Main door:** Teak wood frame with flush shutter and veneer on both sides

**Internal doors:** Hard wood frame with

Masonite skin / laminate on both sides of shutter

**Balcony door:** UPVC / Aluminium

### WINDOWS

UPVC/ Aluminium

### PAINTING & FINISHES

**a) Exterior finish:** Combination of External texture paint with external grade emulsion

**b) Unit Internal ceilings:** Emulsion paint / OBD

**c) Unit walls:** Emulsion paint

### ELECTRICAL

**3 Bedrooms + 3 Toilets:** 6 kW

**Switches:** Modular switches by Anchor / Roma or equivalent make

**DG Backup:** 100% for common areas.

100% for individual units (at additional cost)

### VERTICAL TRANSPORTATION

Lifts provided as per design

## MULTIPLE DOMAINS. SINGLE-MINDED COMMITMENT.



Brigade is one of India's leading developers with over three decades of experience in building positive experiences for all its stakeholders. We have transformed the city skylines of Bengaluru, Mysuru, Mangaluru, Hyderabad, Chennai, Kochi and Ahmedabad with our developments across Residential, Offices, Retail, Hospitality and Education sectors.

Brigade's residential portfolio includes villas, vii laments, penthouses, premium residences, luxury apartments, value homes, urban studios, independent living for seniors and mixed-use lifestyle enclaves & townships. Brigade is among the few developers who also enjoy a reputation of developing Grade A commercial properties. We are the license owners of the World Trade Center across South India, while our commercial spaces have top international clients operating out of them. Brigade's retail projects include Orion Mall, Orion Avenue Mall and Orion Uptown Mall. Brigade's hospitality offerings include star hotels, recreational clubs and convention centres, Celebrations Catering & Events and The Baking Company. Since its inception in 1986, Brigade has completed over 250 buildings amounting to 72 million Sq.ft. of developed space in residential, offices, retail and hospitality sectors across 8 cities.

We have been consistently ranked among the 100 Best Places to Work in India by the Great Place To Work Institute for 11 years in a row. The Group has also been socially responsible and has vastly contributed to society. This responsible attitude and innovative mind-set combined with uncompromising quality of projects over the years, has created a reputed brand.



### GREAT PLACE TO WORK 2021

Brigade was recognised as the Best Place to work in the real estate category for the 11th year in a row by the Great Place To Work Institute

### BRIGADE GROUP

Brigade Group received 'One of India's Top Challengers' award at the CWAB Awards 2019

Brigade Group received the 'Best Developer of the Year' award at the Times Business Awards 2019

Brigade was awarded as one of the Hot 50 Brands in Bengaluru under the Large Enterprise category at the Bengaluru Brand Summit 2018 by Paul Writer

### BRIGADE ORCHARDS

Won the 'Smart Township Project of The Year' award at the 6th Annual Siliconindia Bengaluru Real Estate Awards 2018

### BRIGADE EXOTICA

Won the 'Best Residential Project' at the CIA World Construction & Infra Awards 2018

### BRIGADE CORNERSTONE UTOPIA

Won the 'Integrated Township Project of the Year' award at the 11th Realty Plus Awards 2019 - South

### BRIGADE PANORAMA

Won the award for 'Excellence in Delivery' at the 11th Realty Plus Awards 2019 - South

### BRIGADE PALMGROVE, MYSURU

Won the 'Premium Villa Project of the Year' award at the NDTV Property Awards 2018

### BRIGADE MOUNTAIN VIEW, MYSURU

Won the award for Best Residential Dwellings above 50 units in Mysuru at the CARE Awards 2019

The information depicted herein viz., master plans, floor plans, furniture layout, fittings, illustrations, specifications, designs, dimensions, rendered views, colours, amenities and facilities etc., are subject to change without notifications as may be required by the relevant authorities or the developer's architect, and cannot form part of an offer or contract. Whilst every care is taken in providing this information, the Developer cannot be held liable for variations. All illustrations and pictures are artist's impression only. The information are subject to variations, additions, deletions, substitutions and modifications as may be recommended by the company's architect and/or the relevant approving authorities. The Developer is wholly exempt from any liability on account of any claim in this regard, (1 square metre = 10.764 square feet). E & OE. All dimensions and calculations are done in metric system (M/Sq.m), and imperial system (Ft/Sq.ft) shown is for reference only. All dimensions indicated in the drawing are from unfinished surfaces, excluding plaster thickness and tile thickness.

\*No granite slab/ dado will be provided

\*\*No counter will be provided





**BRIGADE**

Building Positive Experiences

Our Core Values



Celebrating



TO UPGRADE TO BRIGADE • 1800 102 9977 • email: [salesenquiry@brigadegroup.com](mailto:salesenquiry@brigadegroup.com) • [BrigadeAtmosphere.com](http://BrigadeAtmosphere.com)

**Site Marketing Office:**

Sy No 12, State Highway 96,  
Lakshmipura, Devanahalli,  
Bengaluru, Karnataka 562110

**Registered & Corporate Office**

29<sup>th</sup> & 30<sup>th</sup> Floor,  
WTC Bangalore @ Brigade Gateway Campus,  
Dr. Rajkumar Road, Malleswaram-Rajajinagar,  
Bengaluru 560055

**Dubai**

Brigade Enterprises Ltd.,  
708, Atrium Centre, Bank Street, Bur Dubai  
Ph: +971 4 3555504  
[dubaisales@brigadegroup.com](mailto:dubaisales@brigadegroup.com)

OFFICES ALSO AT: CHENNAI | MYSURU | HYDERABAD

RERA no. PRM/KA/RERA/1250/303/PR/220207/004671